

AVAILABLE ACCESSORIES

OPTIONAL THREADED CASTERS

MODEL TC-04



ROUTER TABLE TOPS

MODEL 3357 44" x 24" x 1-1/8" Table Top—Inc. Track & Base Plate Cutout
For use with 20" x 40" WorkBench System

MODEL 3508 32" x 24" x 1-1/8" Table Top—Inc. Track & Base Plate Cutout
For use with 20" x 28" WorkBench System

MODEL 3117 19" x 24" x 1-1/8" Table Top—Inc. Track & Base Plate Cutout
For use with 15" x 20" WorkBench System



ROUTER BASE PLATE

MODEL 3509

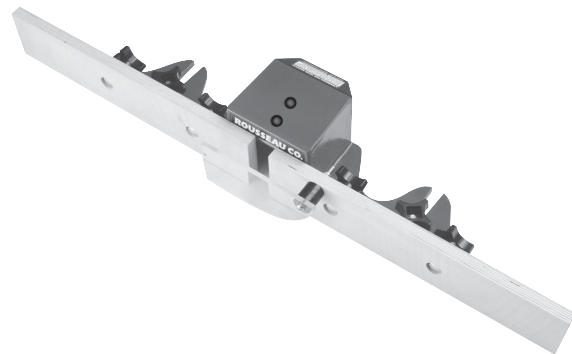
- Thermoset Phenolic Plate
- 9" x 12" x 3/8" Thick
- Fits Router Bits Up To 3 7/8"
- Removable Rings Create 2 5/8" & 3 7/8" Openings



BASIC ROUTER FENCE

MODEL 3301

Solid Cast Aluminum Fence (24" Long)
Will Accommodate Router Bits Up To 3 7/8" dia.
Includes Mounting Instructions & Hardware
Mount Fence Easily By Drilling Two 3/8" Thru Holes 15 1/4" Apart



DELUXE UPGRADE KIT

MODEL 3301-4

Upgrade The 3301 To A 3301DL



POWER SWITCH

MODEL 3506

Prevents Fumbling For Switch, Predrilled
For Ease Of Mounting On Various Surfaces



Crash Bar For
Quick & Safe
Shut Off

ROUSSEAU CO.

1718 13th Street Clarkston, WA 99403
800-635-3416 • 509-758-3954 • Fax 509-758-4991
email:salesinfo@rousseauco.com • www.rousseauco.com

WORKBENCH SYSTEM 07

ROUSSEAU CO.

Quality Power Tool Accessories

OWNER'S MANUAL



WorkBench System

7000 Series

IMPORTANT

Read and understand all safety guidelines and
instructions carefully before operating.

GENERAL INFORMATION

You have purchased a Rousseau Co. **WORKBENCH SYSTEM**. This unit sets up quickly, and is mobile with optional locking casters.

WARRANTY

This product has a lifetime warranty to the original purchaser. The warranty applies to defects in materials and workmanship only. We will repair or replace the product or part(s) at our discretion. This warranty does not apply to product failure or defects due to direct or indirect misuse, abuse, negligence, accidents, alterations, repairs or lack of maintenance. The item must be shipped prepaid to our Clarkston, WA location. If items must be returned for warranty service, call to receive a Return Goods Authorization (RGA) number and further instruction.

SAFETY GUIDELINES

THIS SECTION CONTAINS IMPORTANT SAFETY INFORMATION CONCERNING A HAZARD THAT MAY CAUSE SERIOUS INJURY OR DEATH, and/or damage to stand or equipment if used improperly. Please read the following instructions very carefully.

⚠ WARNING Always follow the safety recommendations and guidelines provided by the manufacturer of your tools. When in doubt refer to your owner's manual or contact the manufacturer.

⚠ WARNING Always use bench on level ground or floor surface. Make sure all legs are in contact with the ground or floor.

⚠ WARNING Make sure all power equipment is securely bolted down. Failure to do so could result in serious injury to self, saw and/or bench.

⚠ WARNING Never overload your bench. Overloading can cause sudden failure that could result in serious injury and even death.

THE BASIC ROUSSEAU WORK BENCH SYSTEM CONSISTS OF THE FOLLOWING:

- 1 - 4 - 32 inch Legs (Leg box includes Glide Feet and Hardware Pack)
- 2 - 4 - adjustable Glide Feet (with two jam nuts each)
- 3 - 1 - Hardware Pack (48 nuts and 48 bolts)
- 4 - 12 - Extenders (6 of each length from a choice of 5 lengths – 15", 20", 28", 40", & 44")

* Options can include such things as casters, hinges, shelves, doors, drawers, & pulls.

ASSEMBLY INSTRUCTIONS:

1. Insert Glide Feet into holes with a jam nut on each side of the four square leg bottoms. Tighten the jam nuts finger tight. The optional caster can be installed at this time in place of the glide feet. The casters don't need jam nuts on both sides of the leg bottoms.

2. Extenders need to be installed next. The size, location and direction of the extenders can vary depending on the desired final configuration. There are five standard sizes of extenders available – 15", 20", 28", 40" and 44". With some simple cutting and drilling, the long extenders can be cut to any length desired. Work benches can be connected together to make bigger benches if desired. There are four standard locations on the legs to mount the extenders. With some simple drilling, the extenders can be located anywhere on the legs. The extenders can be mounted in two directions. The wide flange can be either up or down relative to the narrow flange. Also some extenders can be left off for drawers, vises or other accessories. Support on three sides is adequate for most shelves and allows room for easier access. Have fun figuring out which configuration works best for you. Don't forget that the work bench can be easily changed later if the first configuration isn't the best.

3. The work bench can be squared up before tightening the bolts holding the extenders. A carpenter's square or cross measuring with a measuring tape is a good way to check for square. At this time the adjustable Glide Feet can be adjusted for height and level. Make sure all nuts and bolts are tight before use.

4. To determine shelf size, measure inside the extender if the extender flange is up or inside the leg if the flange is down. Allow at least 1/16" clearance to allow for expansion of the wood. A close fitting shelf may need a radius

on the corners to clear the legs. A close fitting shelf will help keep the work bench square. See material requirements table below.

5. The extenders are sized to allow a 2 inch overhang around the top and have the cuts come out even on standard material. An example is the 44" extender for standard 48" material. The 28 inch extender is sized for the Rousseau router top. The extenders have 3/16" holes cut in the narrow flange for fastening down the top and shelves. #8 screws will work in these holes. The length of the screw should be less than the thickness of the top or shelf material but not too much less for maximum strength. 1/16" to 1/8" less then rounding down to the next standard size usually works well.

6. The 3/16" holes on the edge of the legs are for hinges or fastening sides on the work bench. The 2 1/8" hole spacing fits many standard variable overlay cabinet hinges. A #8 screw and nut works for many of these hinges.

SHELVING MATERIAL REQUIREMENTS

TOP & SHELF DIMENSIONS			
FRAME DIMENSIONS	TOP	MIDDLE & LOWER	4'X8' SHEET REQ.
15" x 15"	19" x 19"	14 5/8" x 14 5/8"	0.5
15" x 20"	19" x 24"	14 5/8" x 19 5/8"	0.5
15" x 28"	19" x 32"	14 5/8" x 27 5/8"	0.5
15" x 40"	19" x 44"	14 5/8" x 39 5/8"	1.0
15" x 44"	19" x 48"	14 5/8" x 43 5/8"	1.0
20" x 20"	24" x 24"	19 5/8" x 19 5/8"	1.0
20" x 28"	24" x 32"	19 5/8" x 27 5/8"	1.0
20" x 40"	24" x 44"	19 5/8" x 39 5/8"	1.0
20" x 44"	24" x 48"	19 5/8" x 43 5/8"	1.0
28" x 28"	32" x 32"	27 5/8" x 27 5/8"	1.0
28" x 40"	32" x 44"	27 5/8" x 39 5/8"	1.0
28" x 44"	32" x 48"	27 5/8" x 43 5/8"	1.0
40" x 40"	44" x 44"	39 5/8" x 39 5/8"	1.5
40" x 44"	44" x 48"	39 5/8" x 43 5/8"	1.5

ITEM	QTY	DESCRIPTION
1.	4	WorkBench Legs
2.	6	Long Extenders (15", 20", 28", 40" or 44")
3.	6	Short Extenders (15", 20", 28", 40" or 44")
4.	48	1/4"-20 Assembly Bolts
5.	48	1/4"-20 Assembly Nuts
6.	4	Adjustable Glide Feet
7.	8	1/2"-13 Glide Jam Nuts
8.	1	Top-Provided By User
9.	2	Shelves-Provided By User

See Fig.1 Below

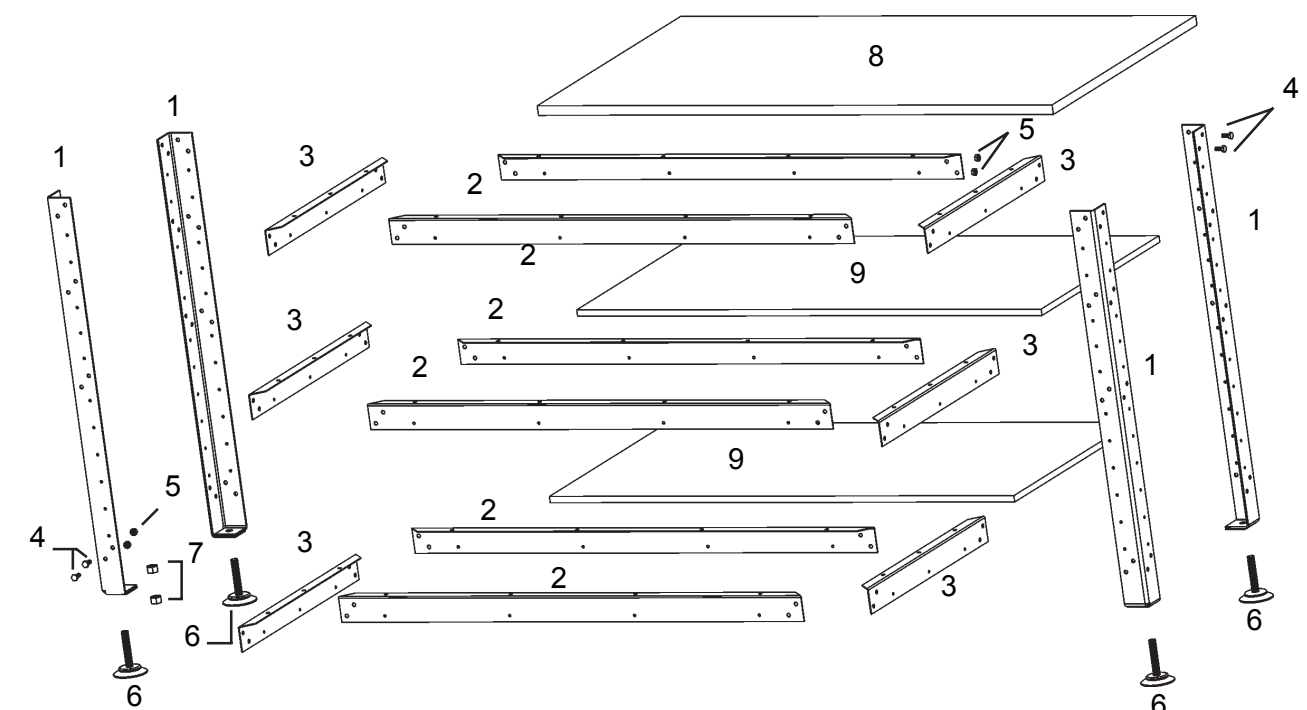


Fig.1