



## HARDWOOD CLADDING

### HARDWOOD CLADDING

Western Maple Cladding is characterized by its variation of color and grain pattern. Our six color options include stains which create more uniform tones. The range of colors provides a full complement of possibility for contemporary interior applications. Western Maple, aka Big Leaf Maple, is a Pacific Northwest native species which varies in color from gray-white to a light pinkish-brown.

Oak Cladding has a clean look with consistent coloration and moderate grain variation. Windfall Lumber's Ink stain or Clear finish provide classic palettes for vertical interior surfaces. White Oak, an eastern US native, is generally wheat colored with small knots and straight or wavy grain.

Black Walnut Cladding is characterized by its rich coloration and visual depth. An eastern US native, Black Walnut varies in color from pale to dark brown, has occasional knots, along with dark lines with figured grain patterns.

### DIMENSIONS

9/16" X 4 1/2"

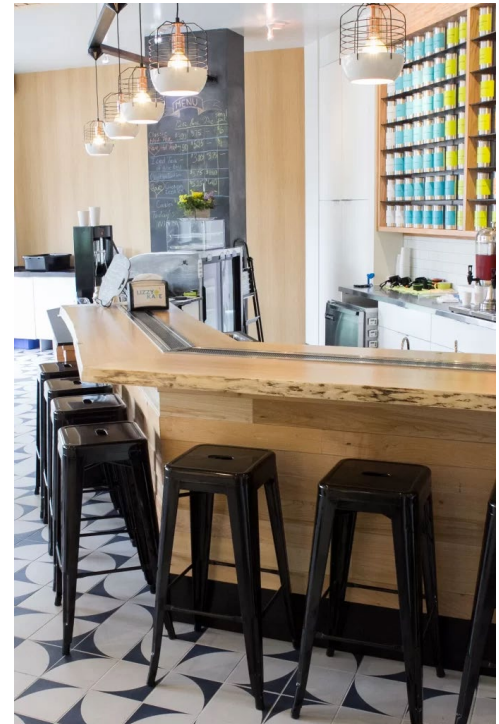
1/16" micro-bevel

Loose sticks are 2'-8' random length

Six standard panel sizes:

- 18" x 18" (full length sticks)
- 18" x 36" (full length sticks)
- 36" x 36" (full length sticks)
- 18" x 54" (random length sticks)
- 18" x 90" (random length sticks)
- 24" x 96" (random length sticks)

*Note: 24" x 96" net size is 22 1/2"*



Western Maple Cladding: Clear | Lizzy Kate, Kirkland, WA

### MATERIAL AND SURFACE

- Species: Western Maple, White Oak, and Black Walnut
- Janka hardness: 850, 1360, and 1010 respectively
- Sanded face with tongue and groove profile

Contact Us: [sales@windfall.design](mailto:sales@windfall.design) | [www.windfall.design](http://www.windfall.design)



The mark of  
responsible forestry  
FSC® C041262



# HARDWOOD CLADDING

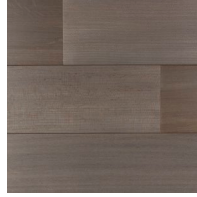
## WESTERN MAPLE STAIN COLORS



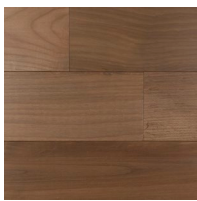
Raven



Brazil



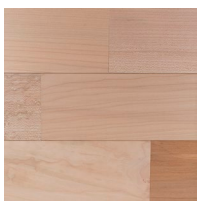
Slate



Russet



Dove

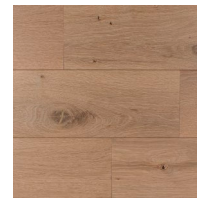


Clear

## WHITE OAK

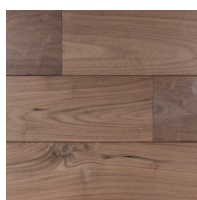


Ink

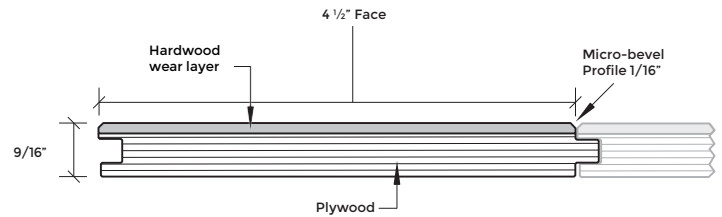


Clear

## BLACK WALNUT



Clear



**FSC CHAIN OF CUSTODY SA-COC-002372-3** when available

### FINISHES / ADHESIVES

- Low VOC waterborne clear coat, 66 g/L
- Stain VOC: 7 g/L
- Sheen: Semi-Gloss 104
- Adhesive VOC: 0 g/L (NAUF compliant)

### FIRE RATING

Class C as-is in native form, Class A and B Available upon request

### SEISMIC RATING

Available upon request

### SAMPLES

Please Contact Us for your request or make your request at [windfall.design](http://windfall.design)

### LEAD TIME

3-5 weeks depending on area, and ship date provided upon order

### MOQ

No Minimum Order Quantity

### POTENTIAL LEED CREDITS

Materials & Res. Credit 3: Materials Reuse

Materials & Res. Credit 4: Recycled Content

Materials & Res. Credit 5: Regional Materials (500 mi of Tumwater, WA)

Materials & Res. Credit 7: Certified Wood

Indoor Environmental Quality Credit 4.1: Low-emitting Materials - Adhesives

Indoor Environmental Quality Credit 4.2: Low-emitting Materials - Paints & Coatings

DISCLAIMER: Since wood is a natural material, there are variations, including knots, texture and grain from piece to piece. The wood used may vary from the wood used in samples or product photography due to the inherent characteristics of the material. In turn, no representation, warranty and/or guarantee is made with respect to the precise color, luster or appearance of finishes.

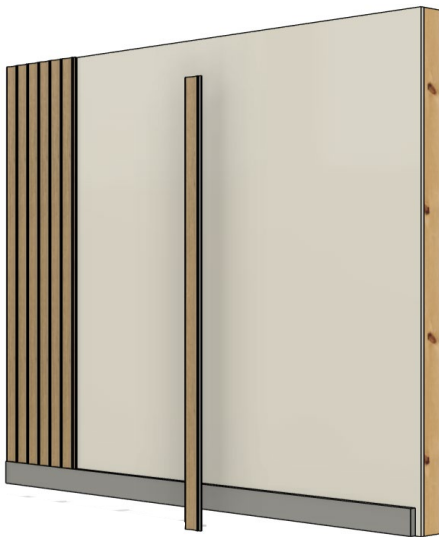
**Contact Us:** [sales@windfall.design](mailto:sales@windfall.design) | [www.windfall.design](http://www.windfall.design)



The mark of responsible forestry  
FSC® C041262

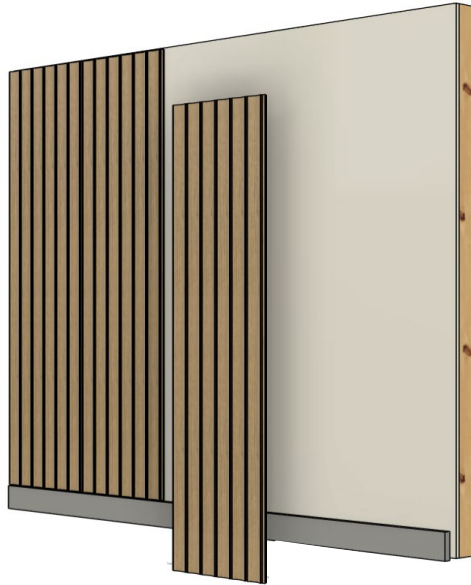
# Hardwood Cladding INSTALLATION METHODS

## STICKS



Tongue + groove cladding (loose sticks) Traditional install with nails + adhesive

## PANELS



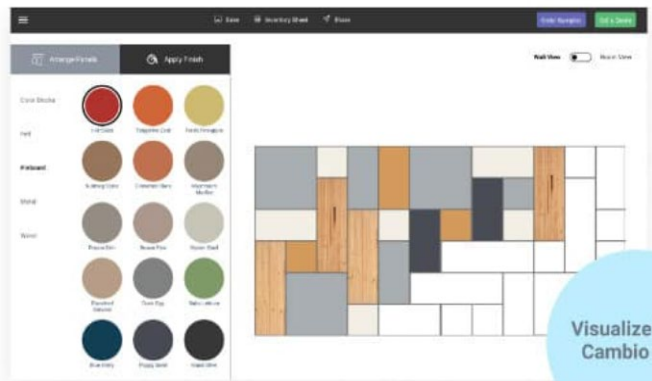
Panels installed using fixed mounted fastener

## CAMBIO PANELS



Cambio by Windfall panels Installed with patented magnetic wall system.

## DESIGN YOUR WALL



USE OUR VISUALIZER TOOL TO DESIGN YOUR WALL. RECEIVE AN INVENTORY LIST, SEND TO OUR TEAM FOR A QUOTE.