



## LIGHT BAR

### LIGHT BAR

Developed in collaboration with Luminii and the River Light Group, the Cambio Light Bar is pre-installed on acoustic felt, and veneer Cambio panels. Mix and match with other panels or design a complete row for continuous illumination anywhere on your wall design.

### DIMENSIONS

Backer Panel Thickness: 3/4"

Light Protrusion: 4"

Panel Size(s): 18" x 18" and 18" x 36"

### LIGHT SOURCE

3000K

24 VDC

LED Static White

Clear Frosted Lens

### FINISHES

Silver Anodized or Matte Black

Wood Veneer or 80% Recycled PET Felt

Veneer only: Low VOC waterborne clear coat, 66 g/L

### FIRE RATING

Class B- Black Core PET Felt

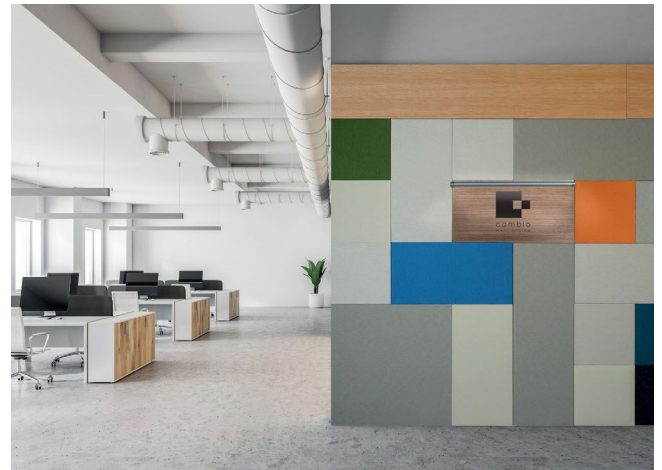
### SEISMIC RATING

Available upon request

### ACOUSTIC RATING

PET Felt: 0.32 SSA 0.30 NRC

Veneer: N/A



Light Bar\_Oak Veneer with various Acoustic Fabric + Felt Panels

### SAMPLES

Please Contact Us for your request or make your request at [windfall.design](http://windfall.design)

### LEAD TIME

3-5 weeks depending on area, and ship date provided upon order

### MOQ

No Minimum Order Quantity

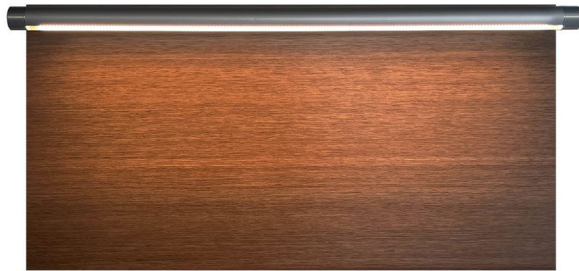


## LIGHT BAR

### SIZES

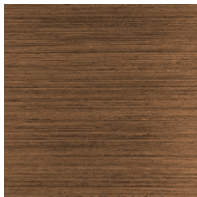


18" x 18"



18" x 36"

### VENEER

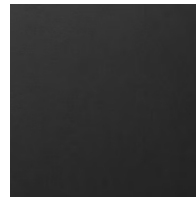


WALNUT

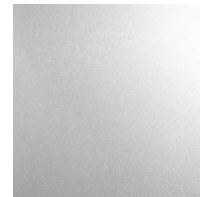


OAK

### FINISH OPTIONS



MATTE BLACK



SILVER ANODIZED

### PET FELT



ORANGE



LIME



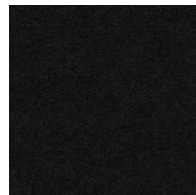
COBALT



LIGHT GREY



PEWTER



JET

DISCLAIMER: PET Felt is made via blending fibers and needle punching. Some boards are a blend of colors and slight variations will exist in shade and needle pattern.

**Contact Us:** [sales@windfall.design](mailto:sales@windfall.design) | [www.windfall.design](http://www.windfall.design)



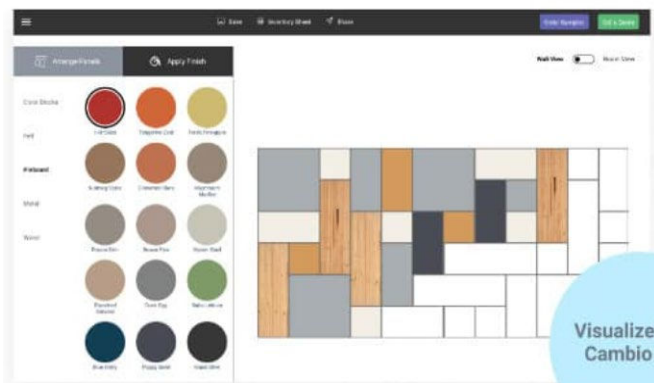
## Light Bar INSTALLATION METHODS

### CAMBIO PANELS



Cambio by Windfall Panels  
Installed with patented  
magnetic Wall System

### DESIGN YOUR WALL



USE OUR VISUALIZER TOOL TO DESIGN  
YOUR WALL. RECEIVE AN INVENTORY LIST,  
SEND TO OUR TEAM FOR A QUOTE.

**Contact Us:** [sales@windfall.design](mailto:sales@windfall.design) | [www.windfall.design](http://www.windfall.design)