



PORTLAND CLADDING

PORTLAND CLADDING

Portland Cladding is made of Douglas Fir and Hemlock reclaimed from solid and glue laminated beams and lumber. These are taken from deconstructed industrial, agricultural, and residential buildings in the Pacific Northwest. Designed with tongue and groove edges for easy installation with standard tools and techniques.

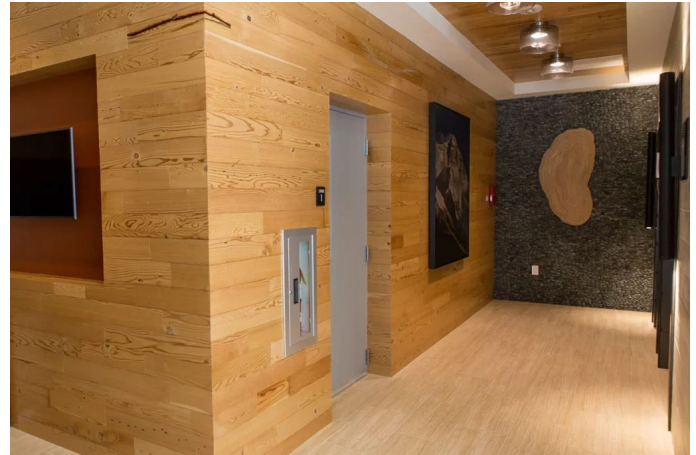
DIMENSIONS

1/2" thick x 4 1/2" wide

Loose sticks are 2' - 8' random lengths

Six standard panel sizes:

- 18" x 18" (full length sticks)
- 18" x 36" (full length sticks)
- 36" x 36" (full length sticks)
- 18" x 54" (random length sticks)
- 18" x 90" (random length sticks)
- 24" x 96" (random length sticks)



Portland Cladding: Clear | The Whittaker Apts., Seattle, WA

MATERIAL AND SURFACE

Reclaimed Douglas Fir and Hemlock

Janka hardness scale 540-710

Smooth face

Tongue and groove profile with micro-bevel

Standard reclaimed marks (nail holes, ferrous staining, glue lines, and occasional bolt holes) will be apparent

Voids, checked knots and small cracks between 1/8" - 1/2" can be expected

FINISHES / ADHESIVES

Low VOC waterborne clear coat, 66 g/L

Stain VOC: 7 g/L

Sheen: Semi-Gloss 104

Adhesive VOC: 0 g/L (NAUF compliant)

FIRE RATING

Class C as-is in native form, Class A and B

Available upon request

SEISMIC RATING

Available upon request

POTENTIAL LEED CREDITS

Materials & Res. Credit 3: Materials Reuse

Materials & Res. Credit 4: Recycled Content

Materials & Res. Credit 5: Regional Materials (500 mi of Tumwater, WA)

Materials & Res. Credit 7: Certified Wood

Indoor Environmental Quality Credit 4.1: Low-emitting Materials - Adhesives

Indoor Environmental Quality Credit 4.2: Low-emitting Materials - Paints & Coatings

FSC CHAIN OF CUSTODY SA-COC-002372-3 when available

Contact Us: sales@windfall.design | www.windfall.design





PORTLAND CLADDING

STAIN COLORS



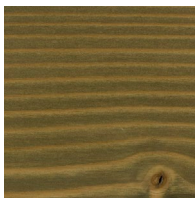
Clear



Cascadian
Brown



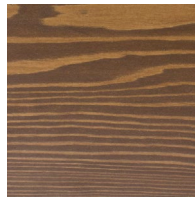
Warm Brown



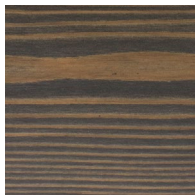
Anthracite



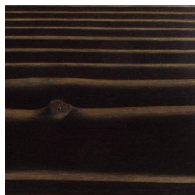
Umber



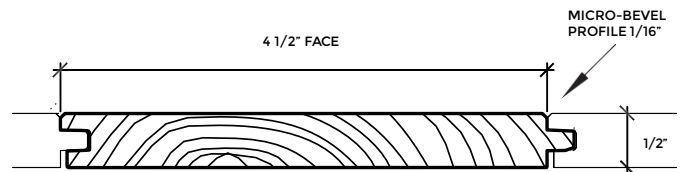
Chestnut



Leather



Ebony



SAMPLES

Please Contact Us for your request or make your request at windfall.design

LEAD TIME

3-5 weeks depending on area, and ship date provided upon order

MOQ

No Minimum Order Quantity

DISCLAIMER: Since wood is a natural material, there are variations, including knots, texture and grain from piece to piece. The wood used may vary from the wood used in samples or product photography due to the inherent characteristics of the material. In turn, no representation, warranty and/or guarantee is made with respect to the precise color, luster or appearance of finishes.

Contact Us: sales@windfall.design | www.windfall.design

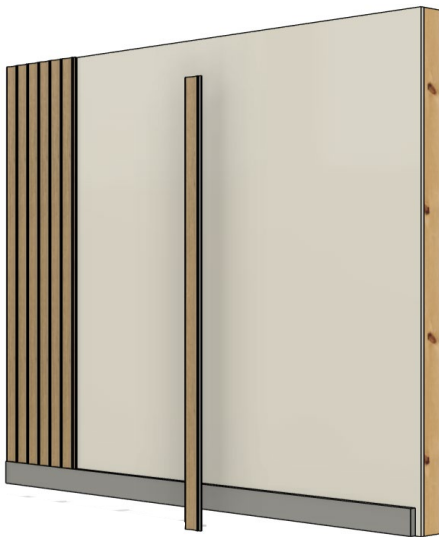


The mark of
responsible forestry
FSC® C041262



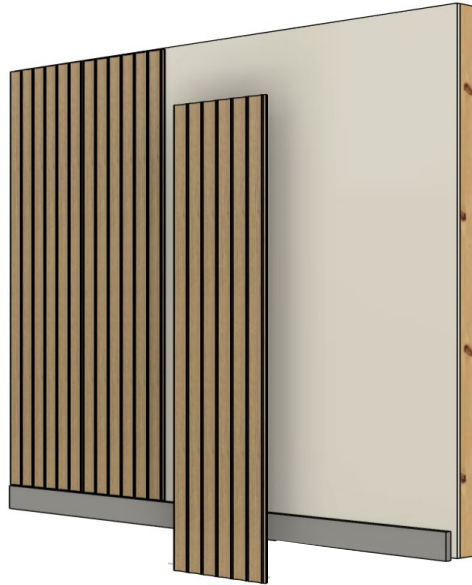
Portland Cladding INSTALLATION METHODS

STICKS



Tongue + groove cladding (loose sticks) Traditional install with nails + adhesive

PANELS



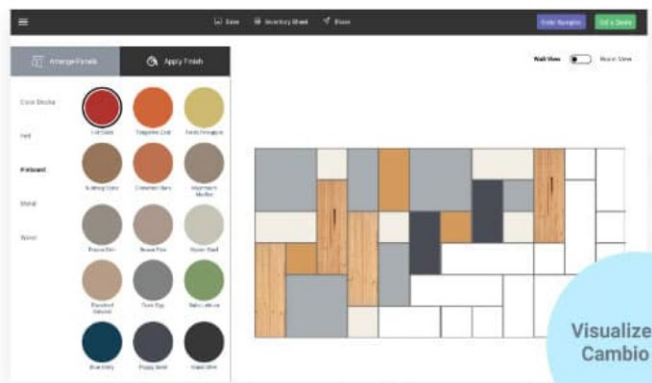
Panels installed using fixed mounted fastener

CAMBIO PANELS



Cambio by Windfall panels Installed with patented magnetic wall system.

DESIGN YOUR WALL



USE OUR VISUALIZER TOOL TO DESIGN YOUR WALL. RECEIVE AN INVENTORY LIST, SEND TO OUR TEAM FOR A QUOTE.

Contact Us: sales@windfall.design | www.windfall.design



The mark of responsible forestry
FSC® C041262